

Current Transducers

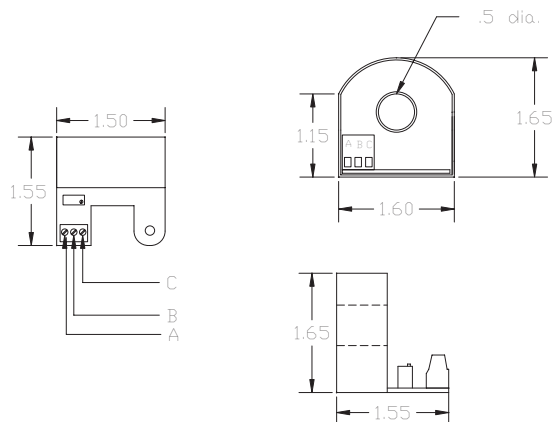
AC Current to DC Voltage



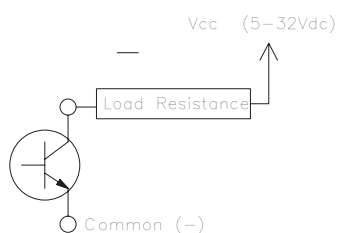
FEATURES:

- 0-10 VDC output signal proportional to the input AC current
- Output voltage adjustable by multiturn pot
- For use with Analog and Digital meters, PLC's and PC's
- Overvoltage protection
- Attaches to HBCcontrols assemblies
- Optional LED input status indicator available
- Optional DIN Rail Mount available (-DIN)

PART NO.	RANGE (Amps AC)	OUTPUT VOLTAGE	COMMENTS
HBC-138-10	0 - 10	10 Vdc at Full Scale	<ul style="list-style-type: none"> • 10Vdc set at factory • Adjustable as required for tighter accuracy
HBC-138-20	0 - 20		
HBC-138-30	0 - 30		
HBC-138-40	0 - 40		
HBC-138-50	0 - 50		
HBC-138-60	0 - 60		
HBC-138-70	0 - 70		
HBC-138-80	0 - 80		
HBC-138-90	0 - 90		
HBC-138-100	0 - 100		
HBC-138-103	10 - 30	Adjustable 5 - 10 volts Full Scale	• Output not set at factory
HBC-138-105	30 - 50		
HBC-138-103Z	10 - 30	LED shows load status	• No voltage output
HBC-138-105Z	30 - 50		
HBC-138-103NPN	10 - 30	3 - 32 Vdc (Sink) VIA NPN Transistor	A = Load, 200 mA max B = COM
HBC-138-105NPN	30 - 100		



NPN Version



NOTES:

- A - Output (+)
- B - Jumper to A (10K resistor shunt for use with Digital Meters)
- C - Output (-)

Current Transducers

AC Current to DC Voltage



FEATURES:

- 0-10VDC output signal proportional to the input AC current
- Output voltage adjustable by multiturn pot
- Shift to an analog meter or a digital meter by changing output terminations
- Overvoltage protection
- Designed to fit on Crydom CM series relays and HBCcontrols stripped wire DIN mount assemblies

PART NO.	RANGE (Amps AC)	OUTPUT VOLTAGE	COMMENTS
HBC-138A-5	0-5	10VDC at full scale	<ul style="list-style-type: none"> • 10VDC set at factory Adjustable as required for tighter accuracy • For use with 1mA Analog and Digital meters • Accuracy + 2% • Linearity + 3% • 2mA maximum current output
HBC-138A-10	0-10		
HBC-138A-20	0-20		
HBC-138A-30	0-30		
HBC-138A-40	0-40		
HBC-138A-50	0-50		
HBC-138A-60	0-60		
HBC-138A-70	0-70		
HBC-138A-80	0-80		
HBC-138A-90	0-90		
HBC-138A-100	0-100		
HBC-138A-103	10-30	Adjustable 0-10 volts full scale	Output not set at factory
HBC-138A-305	30-50		

